

GENERAL PROVISIONS

APPLICATION PROCESS

Materials are available online and at the:

- Sullivan County SWCD Office
2316 N Section Street
Sullivan, IN 47882

Schedule an appointment with the Watershed Coordinator or other appropriate staff to confirm eligibility and 319 funding availability.

The MNBC Cost-Share Program uses a continuous sign-up system, though funds are finite within the timeline of the grant. Proposed practices must lie within a critical area of the watershed for the pollutant addressed and must be installed according to specifications and with pre-approval.

CONSERVATION PLANNING

The Watershed Coordinator works with local USDA offices and technical staff to develop conservation plans as required by the Section 319 program. These documents can also be used as planning guidelines for other programs.

PRACTICE STANDARDS

All structures and vegetative practices must meet standards as defined by NRCS guidelines when available. Eligible practices must follow an approved engineering plan when applicable.

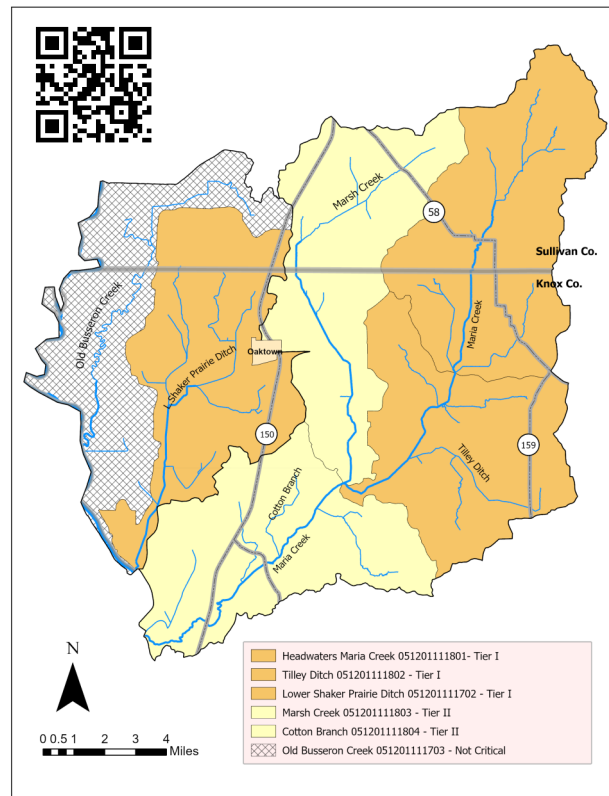
PAYMENTS

Payments are made as percentage reimbursements of practice implementation expenses. Participants must provide documentation of all costs, including cash or in-kind match. \$30,000 cap per customer.

After staff has verified practice implementation, a submittal will be made for program approval and payment. **Payments may take up to 8-12 weeks** and will be issued as a check from Sullivan SWCD (no direct deposits). A 1099 will be issued for payments over \$600.

WATERSHED INFO

The MNBC Watershed spans 89,061 acres in Sullivan and Knox counties. The purpose of this initiative is to improve regional water quality through the installation of conservation practices in critical areas as shown on the map below.



This project has been funded wholly or in part by the United States Environmental Protection Agency under assistance #90824 to the Indiana Department of Environmental Management. The contents of this document do not necessarily reflect the views and policies of the Environmental Protection Agency, nor does mention of trade names or commercial products constitute endorsement or recommendation for use.

Maria-No Business Creek Watershed

319 Cost-Share Program



Watershed Coordinator

E-mail: laura@watershed-alliance.org

Cell: (812) 564-1162

www.watershed-alliance.org



Sullivan SWCD Office

Phone: (812) 268-5157 x3

2316 North Section Street

Sullivan, IN 47882

Guideline to Cost-Share Practices and Payment Rates

Short-Term Vegetative Practices

- **Cover Crops 60-75% cost-share**
 - ⇒ 75% for NEW customers (no cover crops >5 yrs)
 - ⇒ 60% for other applicants

Seed and labor costs reimbursed.

Fertilizer costs excluded.

Single-year commitment (3 yrs/field max cost-share).

Not to be used in conjunction with NRCS payments.

- **Critical Area Planting - 75%**
- **Forage and Biomass Planting - 75%**
 - Must be converting from row-crop farming.
 - Must maintain for 5 years (no annuals).
- **Pasture Seeding - 75%**
 - Must be associated with a rotational grazing and/or exclusion efforts. Seed and labor only

10-Year Vegetative Practices

Practices must remain in place for 10 years minimum
No yearly incentive payments

- **Field Border**
- **Filter Strip**
- **Grassed Waterway *****
- **Wetland Construction* ****
- **Riparian Buffer Establishment**
- **Tree and Shrub Establishment**

* Primary purpose must be reduction of pollutants.

**Permits may be necessary

*** Approved engineering plan necessary

Nutrient and Tillage Reduction

- ⇒ **Equipment Cost-Share**
75% Cost-Share with \$15,000 cap

Practices must remain in place for a minimum of 5 years.
Must be moving from a lower to higher residue systems.
Must demonstrate reduction in N, P, or sediment.
Technology must be new to the operation.
No replacements/repairs. No software subscriptions.
No incentive payments

- **No-Till Planter Upgrades**
- **Reduced Tillage Mods (Chopping Heads)**
- **Guidance/AutoSteer**
- **Swath Control/Variable Rate for N**
- **Cover Crop Seeding Equipment**

Livestock Practices

Practices must remain in place for 10 years minimum
Must possess livestock at the time of sign-up
Must provide proof of grazing plan upon request

- **Livestock Fence (interior/exclusion only)**
- **Animal Trails and Walkways**
- **Watering Facility**
- **Heavy Use Area Protection**
- **Roof & Stormwater Runoff Structures**

Structural Practices

Practices must remain in place for 10 years minimum. Must follow approved engineering plan.

75% Cost-Share

- **Diversion**
- **WASCOB (Water & Sediment Control Basin)**
- **Terrace**
- **Grade Stabilization Structure**
- **Streambank/Shoreline Protection****

**Permits may be necessary

** No rip-rap/vegetative measures only

May apply for redesign and reconstruction of structures that have outlived their useful lifespan.

**\$30,000 CAP per customer for all
319-funded practices**

319 is Unable to Fund:

- Projects outside of designated critical areas
- Log Jam removal projects
- Purchase of land, easements, etc.
- Fertilizer or other soil amendments
- Purchase of large equipment
- Dredging or channelization
- Sales Tax
- Projects associated with mitigation or permit compliance
- Projects directed at water quantity rather than water quality

