

APPLICATION PROCESS

Eligibility forms are available online and at:

- Greene County SWCD Office
104 CR 70 E, Suite B
Bloomfield, IN 47424

Staff will schedule an appointment to review eligibility for conservation practices and funding programs (319, NRCS, FSA, or other applicable options).

The PCWP Cost-Share Program uses a continuous sign-up system, though funds are finite within the timeline of the grant and a WAIT LIST may be enacted until additional funding becomes available. Proposed practices must lie within a critical area of the watershed for the pollutants addressed and must be installed according to specifications and with pre-approval. **Critical areas include land uses that pertain to cropland and livestock grazing only.**

PLAN DEVELOPMENT

Watershed Alliance staff work with local NRCS offices to develop Engineering and Conservation plans as required by the 319 program. These documents are used as planning guidelines for 319 projects.

Requests to NRCS for engineering plans may take up to 6 months for development, depending on the complexity of the project and current NRCS workload.

PRACTICE STANDARDS

All structures and vegetative practices must meet standards as defined by NRCS guidelines when available. Select eligible practices must be new to the business or homestead.

PAYMENTS

Payments are made as reimbursements of practice implementation expenses. Participants must provide documentation of implementation costs, including cash or in-kind match.

After staff has verified practice implementation, a submittal will be made for program approval and payment. **Payments may take 8-12 weeks.**

For some vegetative practices, payments are made for the first year of implementation only.

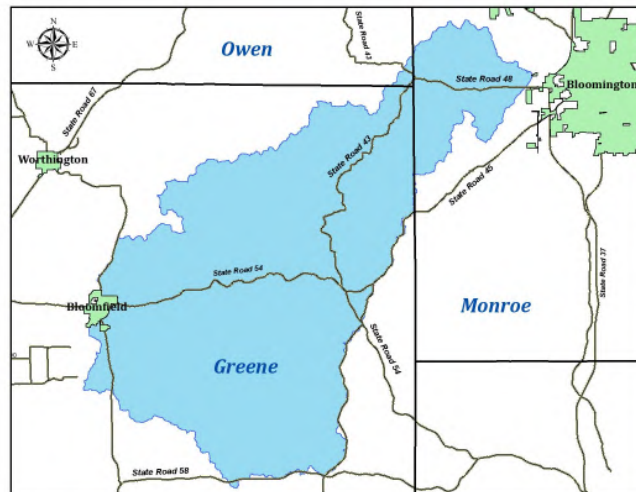
WATERSHED LOCATION



The Plummer Creek Watershed consists of 110,946 acres.

Richland Creek and Plummer Creek are its largest tributaries.

Counties include Greene, Monroe, and Owen .



This project has been funded wholly or in part by the United States Environmental Protection Agency under assistance C9975482-16 to the Indiana Department of Environmental Management. The contents of this document do not necessarily reflect the views and policies of the Environmental Protection Agency, nor does mention of trade names or commercial products constitute endorsement or recommendation for use.



319 Cost-Share Program II 2019-2022

104 CR 70 E, Suite B
Bloomfield, IN 47424

Phone: (812) 384-4634 x3
Cell: (812) 564-1162
www.watershed-alliance.org

laura@watershed-alliance.org



THE WEST CENTRAL INDIANA
WATERSHED ALLIANCE IS A FUNCTION OF THE
GREENE COUNTY SOIL & WATER
CONSERVATION DISTRICT

Guidelines to Cost-Share Practices and Payment Rates

Short-Term Vegetative Practices

75% Cost-Share with \$50,000 cap

- **Cover Crops**

Payment issued for seed and labor costs.

Fertilizer costs excluded

Single-year commitment

Not to be used in conjunction with NRCS payments.

- **Critical Area Planting**

Must be converting from production farming.
Must maintain for 5 years.

Not intended to be cut and sold as hay.
No Annuals

- **Pasture Seeding/Prescribed Grazing**

Must be associated with a rotational grazing and/or exclusion efforts.

10-Year Vegetative Practices

75% Cost-Share with \$50,000 cap

Practices must remain in place for 10 yrs minimum.

- **Field Border**
- **Filter Strip**
- **Grassed Waterway**
- **Wetland Construction*** **
- **Riparian Buffer Establishment**
- **Tree and Shrub Establishment**

* Primary purpose must be reduction of pollutants.

**Permits may be necessary.

*Must follow NRCS specifications and engineering.
Practices must remain in place for 10 yrs minimum.
May apply for redesign and reconstruction of structures that have outlived their useful lifespan.

Livestock Practices

75% Cost-Share with \$50,000 cap

Practices must remain in place for 10 yrs minimum.

Must possess livestock on-site at the time of sign-up.

Must provide proof of Grazing Plan upon request.

- **Access Control (Interior Fencing) ***
- **Animal Trails and Walkways***
- **Watering Facility***
- **Heavy Use Area Protection**
- **Spring Development***
- **Roof and Stormwater Runoff Structures**

*Must be associated with a grazing plan and exclusion efforts. Not intended for exterior fence that is not associated with rotational grazing efforts.

Structural Practices

75% Cost-Share with \$50,000 cap

Practices must remain in place for 10 yrs minimum.

Requires an approved engineering plan

Intended for erosion control in cropland

- **Diversion**
- **WASCOB** (Water & Sediment Control Basin)
- **Terrace**
- **Grade Stabilization Structure**



Additional BMPs are available, pending eligibility and project feasibility.
For more information see full list (Cost-Share Guidelines) at watershed-alliance.org or make an appointment with 319 Coordinator.

Reduced Nutrient and Tillage

75% up to \$1,000/row unit

Practices must remain in place for 5 yrs minimum.

Must be able to provide Nutrient Management Plan upon request.

- **Planter Modifications/Upgrades**
- **Reduced Tillage Equip. Modifications**

*NRCS definitions of reduced tillage and no-till.

*Upgrade must reflect transition from a higher to lower system of tillage.

Precision Ag Equipment

75% Cost-Share with \$10,000 cap

Practices must remain in place for 5 yrs minimum.

Technology must be **new** to the operation.

Equipment must facilitate reduction of nutrients.

Must be able to provide Nutrient Management Plan upon request.

- **AutoSteer/Guidance**
- **Variable Rate Controllers**
- **Cover Crop Seeder Attachments**

319 is Unable to Fund:

- Projects outside of critical areas
- Log Jam removal projects
- Purchase of land, easements, etc.
- Fertilizer or other soil amendments
- Purchase of large equipment
- Dredging
- Sales Tax
- Projects associated with mitigation or permit compliance
- Projects directed at water quantity rather than water quality